

Photocell Sensor Head, 800–1500W Load, IP65, 100–240VAC, Zero-Cross Relay

OVERVIEW

The 1-C-SEN-PHOTOCELL is a digital photocell sensor head designed for automatic dusk-to-dawn switching of exterior lighting loads. Using MCU-based zero-cross relay switching, it eliminates inrush current at turn-on, reducing stress on both the relay and connected loads. Suitable for controlling lighting circuits in commercial and industrial outdoor installations.

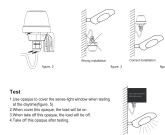
The unit operates on 100–127VAC or 220–240VAC, 50/60Hz, with a maximum load capacity of 800W at 100–127VAC and 1500W at 220–240VAC. The light-level trip point is field-adjustable between 5 and 20 Lux (on), with an off threshold ranging from 30 to 70 Lux depending on knob position. The manufacturer rates service life at up to 5 years.

The sensor head carries an IP65 environmental rating, suitable for exposed outdoor mounting. A 3-year warranty is included.

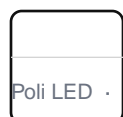
SPECIFICATIONS

Input voltage	100-127VAC / 220-240VAC, 50/60Hz	IP rating	IP65
Power	800 W	Dimensions	65 x 45 x 60 mm (body), 97 mm mounting depth, 19 mm projection mm

INSTALLATION



CERTIFICATIONS & COMPLIANCE



IP65

IP65